

Welcome to Ruby Reflections Mental Health

Embark on Your Journey to True Well-being

We are here to support and empower you to achieve mental clarity, emotional balance, and a fulfilling life.



Who We Are?

Welcome to Ruby Reflections Mental Health, your dedicated partner in mental health and well-being. Our team of professionals, skilled in providing personalized care, is here to support you through the challenges of mental health. We use a holistic approach that combines evidence-based practices with genuine empathy to create a nurturing environment for healing.

Whether you need therapy, resources, or a supportive community, Ruby Reflections Mental Health is committed to helping you feel empowered and valued. Join us in breaking the stigma around mental health and advancing towards resilience and fulfillment. Your wellness journey starts here.

More About Us

Services We Provide

Telehealth

We offer comprehensive telehealth services to support individuals on their path to better health and well-being, all from the comfort and privacy of your own home. Our specialized telehealth programs combine evidence-based interventions with compassionate care to address a wide range of health concerns.

Read More

Medication Management

We offer expert medication management services to support your mental health journey. Our experienced professionals work closely with you to ensure safe and effective use of medications.

Read More

Supportive Psychotherapy

We offer supportive psychotherapy to help you navigate life's challenges with compassion and understanding. Our skilled therapists provide a safe and nurturing environment for exploring your thoughts, feelings, and experiences.

Read More

Addiction and Substance Use Treatment

We offer comprehensive addiction and substance use treatment to support individuals on their path to recovery. Our specialized programs combine evidence-based interventions with compassionate care to address the complex nature of addiction.

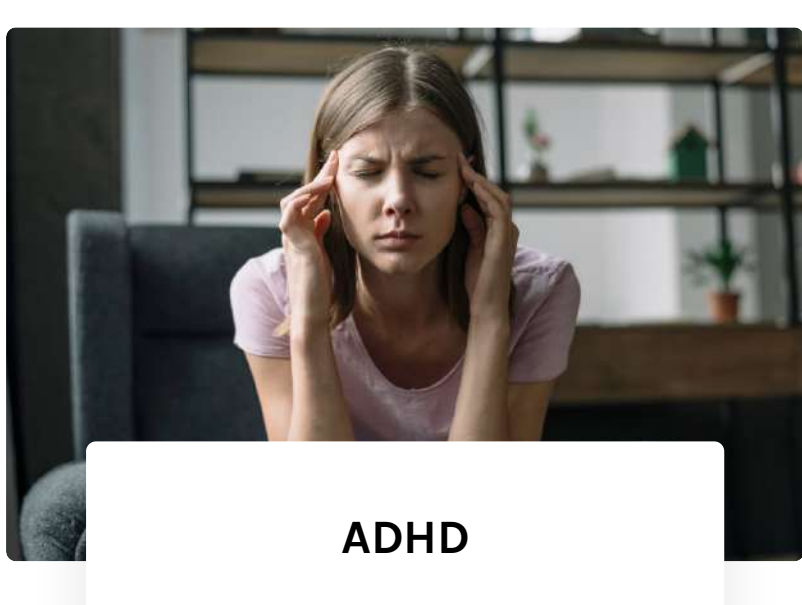
Read More

Comprehensive Psychiatric Evaluation

At Ruby Reflections Mental Health, we offer comprehensive psychiatric evaluations tailored to meet your unique needs. Our evaluations are conducted by experienced professionals who prioritize thoroughness and compassion.

Read More

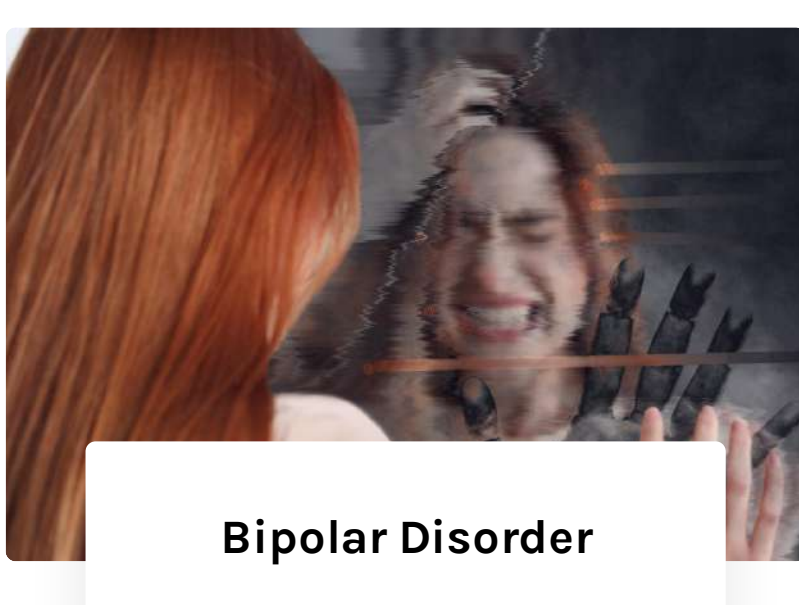
Conditions Treated



ADHD



Schizophrenia



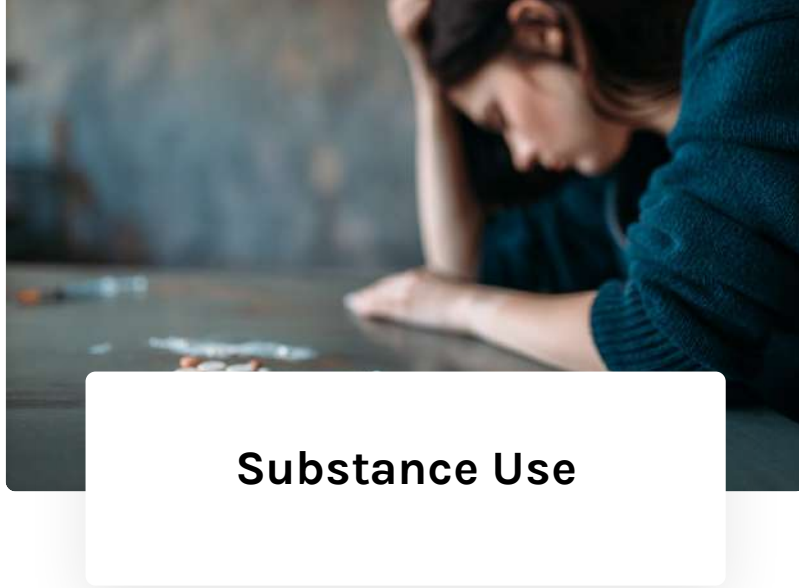
Bipolar Disorder



Depression



Anxiety Disorder



Substance Use

View More Conditions

Insurance We Accept



KEMISOLA EBIETOMIYE

Psychiatric Nurse Practitioner, MSN, APRN, PMHNP-BC

"Kemi" Kemisola Ebietomiye is an ANCC board certified Psychiatric Nurse Practitioner. As a psychiatric nurse practitioner, Kemi brings a unique blend of experiences to practice. With a solid foundation forged during her eight-year tenure in the United States Army, she developed resilience, discipline, and a commitment to service. Kemi obtained a post master's certificate as a Psychiatric-Mental Health Nurse Practitioner (PMHNP-BC) from Walden University. Kemi has honed her skills across diverse settings, including outpatient clinics, psychiatric hospitals, and community mental health centers. She has worked with individuals spanning all age groups, from children and adolescents to adults and older adults. Through her clinical practice, she has developed a deep understanding of various mental health disorders, including mood disorders, anxiety disorders, panic disorders, insomnia, ADHD, OCD, PTSD, personality disorders, substance use, and she is equipped to address all mental health conditions. Her experience also includes providing psychiatric support to residents of Brooklyn care homes, where she has addressed complex conditions with empathy and professionalism.

Her approach is open-minded, holistic, and solution-oriented. Her goal for each appointment is for patients to leave feeling confident in their treatment plan, respected in their concerns, and hopeful about their future.



What our clients say about us?

J

John Englishman

Ruby Reflections offers a unique combination of medication management and coping skills education that has completely transformed my life. I am immensely grateful to have found such a supportive and impactful healthcare resource.

M

Mark Brown Jr.

Booking at Ruby Reflections was easy, with helpful reminders and clear instructions. Dr. Cecilio Gonzalez provided a thorough, unrushed exam, and the polite, professional staff made me feel confident in my care.

Write a Review

Contact Us

Our nurses are always poised to take your calls and respond to your messages.

Kindly leave a message now.



Texas

469-250-1544



New York

347-378-3144



Email

info@rubyreflectionsmd.com



Address

Brooklyn, New York, 11249

First Name

Last Name

Email Address

Phone no:

Your Message

Do you Agree to receive text messages from RubyReflections metal health sent from 469-250-1544/347-378-3144. Message frequency varies and may include appointment reminders and follow up Instructions. Message and data rates may apply. Reply STOP at any time to end or unsubscribe.

For assistance, reply HELP or contact support at 469-250-1544/347-378-3144 or support@rubyreflectionsmd.com

☐ Yes, I agree to receive text messages from Rubyreflections Mental health sent from 469-250-1544/347-378-3144

☐ No, I do not want to receive text messages from Ruby Reflections Mental health

See our [Privacy policy](#) for details on how we handle your information. We never share or sell your opt-in information

Submit

Useful Links

- > Home
- > About Us
- > Blogs
- > Contact Us

Welcome to Ruby Reflections Mental Health, your dedicated partner in mental health and well-being. Our team of professionals, skilled in providing personalized care, is here to support you through the challenges of mental health.



Book Online

Contact

TX/WA: 469-250-1544

NY/NJ: 347-378-3144

info@rubyreflectionsmd.com

Dallas, TX 75227

Brooklyn, NY 11249

Jersey City, NJ 07

Seattle, WA

Monday- Sat

Sunday (clos



Now offering video visits!

See available times and book an appointment right here.

It's free, fast and secure.

Book Online

